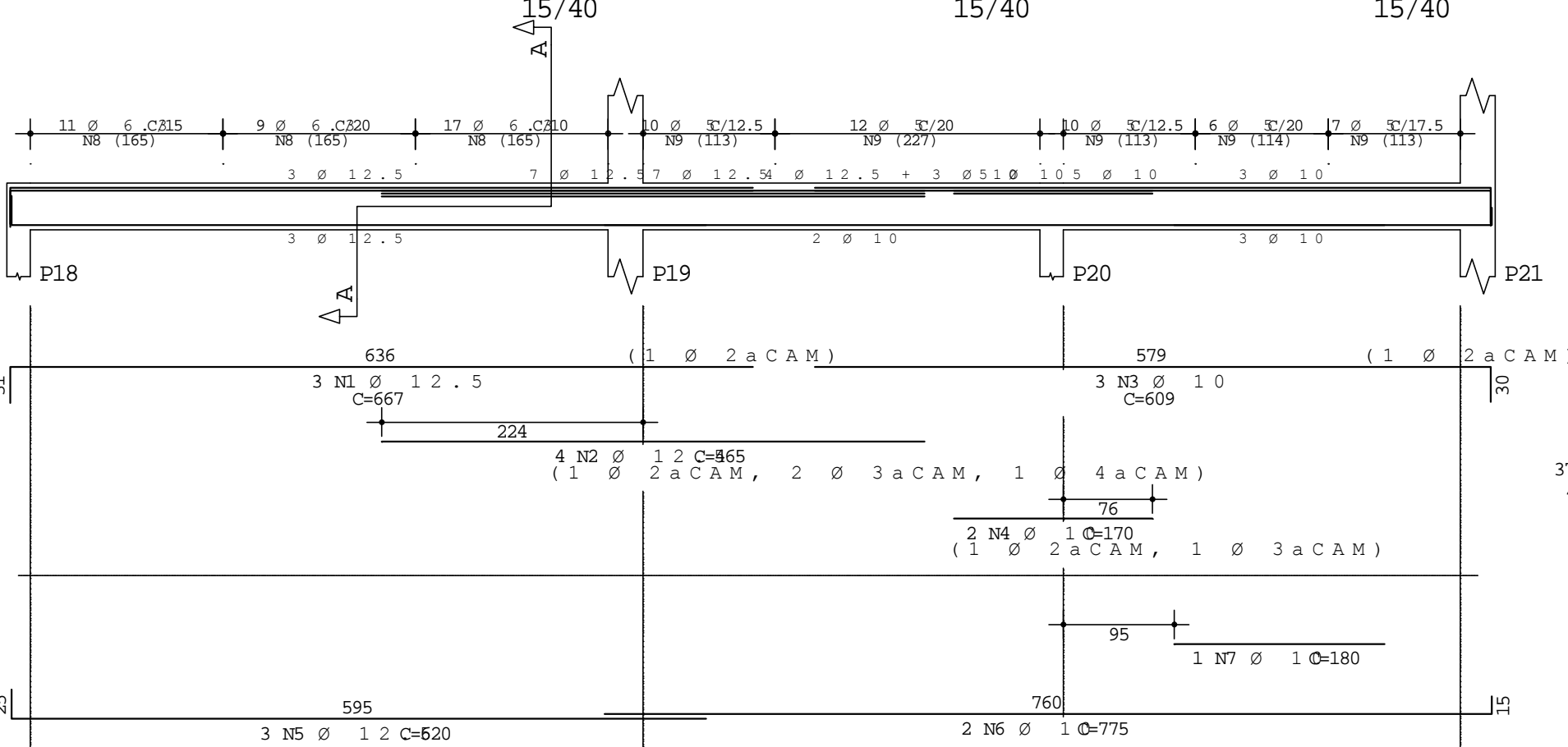
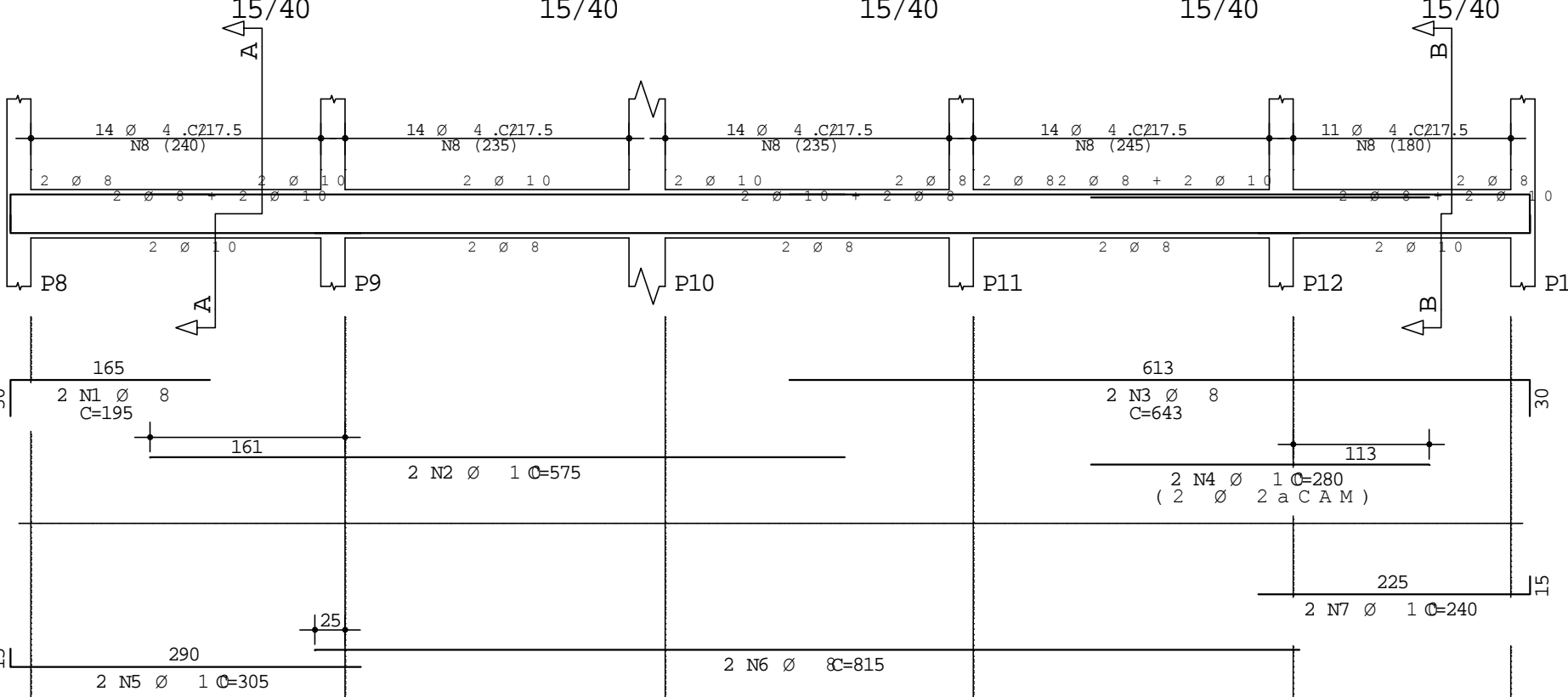


V207



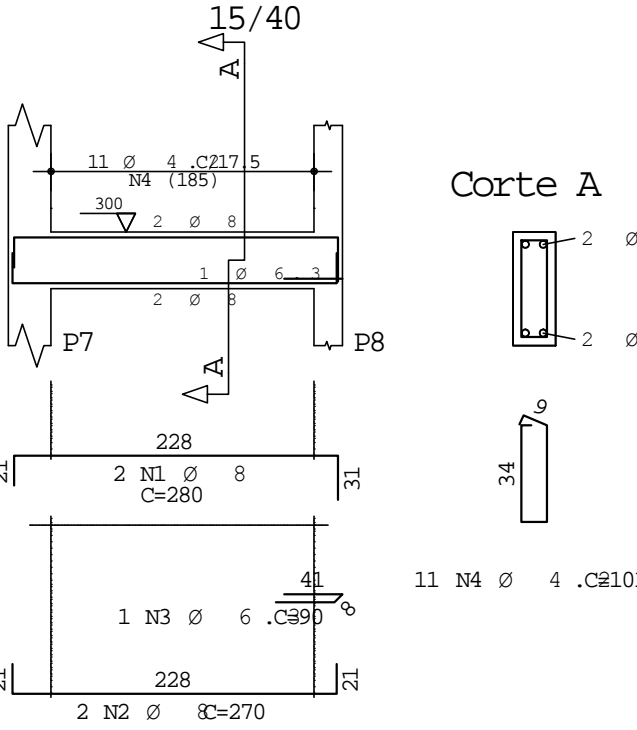
V206



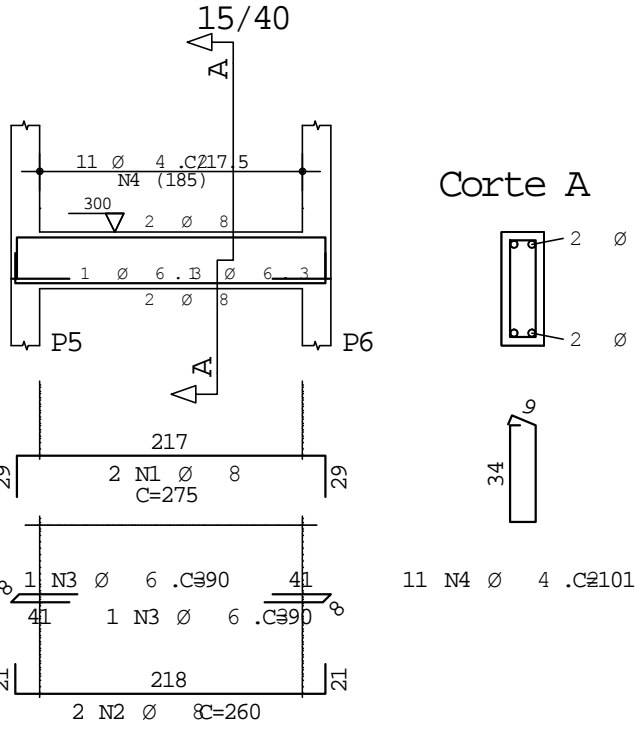
Corte A

Corte B

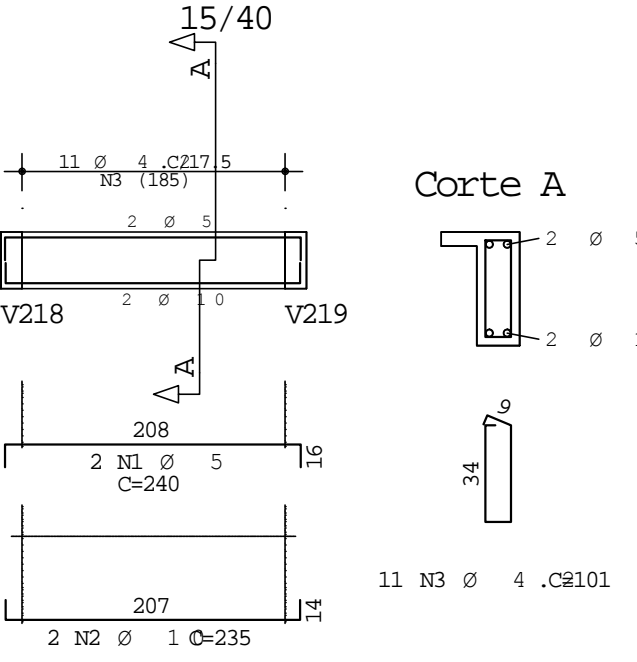
V205



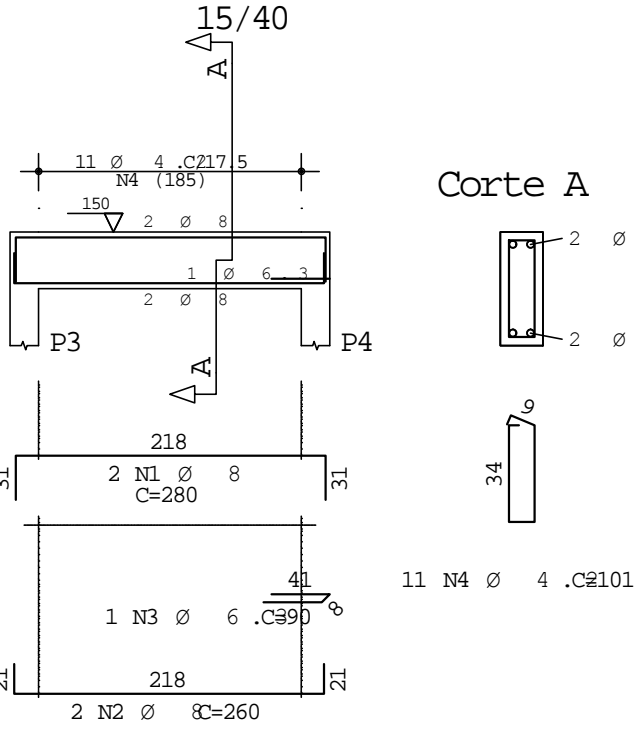
V204



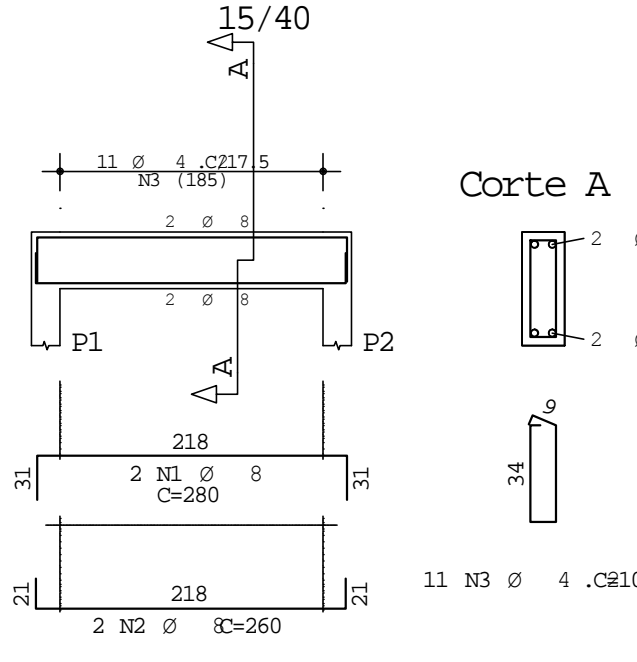
V203



V202



V201



A	Ç	Ø	POS	BIT (mm)	QUANT	COMPRIMENTO	
						UNIT (cm)	TOTAL (cm)
V201	50A	1	8	2	280	560	
	50A	2	8	2	260	520	
	60B	3	4.2	11	101	1111	
V202	50A	1	8	2	280	560	
	50A	2	8	2	260	520	
	60B	3	6.3	11	90	90	
V203	50A	1	5	2	240	480	
	50A	2	10	2	235	470	
	60B	3	4.2	11	101	1111	
V204	50A	1	8	2	275	550	
	50A	2	8	2	260	520	
	60B	3	6.3	11	90	180	
V205	50A	1	8	2	280	560	
	50A	2	8	2	270	540	
	60B	3	6.3	11	90	90	
V206	50A	1	8	2	195	390	
	50A	2	10	2	575	1150	
	50A	3	8	2	643	1286	
V207	50A	1	8	2	280	560	
	50A	2	8	2	260	520	
	60B	3	6.3	11	90	180	

RESUMO AÇO CA 50 - 60				
A	Ç	Ø	COMPR	PESO
			(m)	(kg)
60B	4.2	123	13	
50A	5	50	8	
50A	6.3	41	10	
50A	8	76	30	
50A	10	72	44	
50A	12.5	57	55	
Peso Total			60B =	21 kg
Peso Total			50A =	140 kg

CLIENTE
UENP-CCP

CORR
BIBLIOTECA - AMPLIAÇÃO

TÍTULO
APNA V205 F130

V201 / V202 / V203 / V204
V205 / V206 / V207

DATA
12/01/2018

ESCALA
1:50

POX
250

DESENHO

VERIF.

BRQ

OBRA N.º
20181

DES. N.º
11

REV. N.º
00