

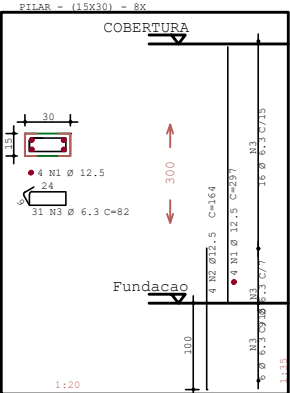
Elem	Caso 1
Fz	
P1	5.6
P2	5.6
P3	9.1
P4	9.1
P5	5.1
P6	5.1
P7	5.0
P8	5.0
Soma	49.6

ACO	POS	BIT (mm)	QUANT	COMPRIMENTO (cm)	TOTAL (cm)
COBERTURA - Armadura negativa horizontal					
50A	1	6.3	50	163	8150
50A	2	6.3	2	130	260
50A	3	6.3	32	125	4000
50A	4	6.3	32	110	3520
50A	5	6.3	48	130	6240
50A	6	6.3	28	105	2940
60B	7	5	13	1140	12540
V14	50A	1	8	635	1270
50A	2	8	3	625	1250
60B	3	4.2	39	81	3159
V15	50A	1	8	205	615
50A	2	10	10	785	1570
50A	3	10	165	165	165
50A	4	8	210	420	420
50A	5	8	700	1400	1400
50A	6	10	420	840	840
60B	7	4.2	60	90	5850
60B	8	4.2	335	1340	1340
60B	9	4.2	363	726	726
60B	10	4.2	402	804	804
V16	50A	1	8	205	615
50A	2	10	10	785	1570
50A	3	10	165	165	165
50A	4	8	210	420	420
50A	5	8	700	1400	1400
50A	6	10	420	840	840
60B	7	4.2	90	5850	5850
60B	8	4.2	335	1340	1340
60B	9	4.2	363	726	726
60B	10	4.2	402	804	804

ACO	POS	BIT (mm)	QUANT	COMPRIMENTO (cm)	TOTAL (cm)
RESUMO AÇO CA 50-60					
60B	4.2	206	22	22	22
60B	5	125	19	19	19
50A	6.3	251	62	62	62
50A	8	74	29	29	29
50A	10	52	32	32	32
Peso Total	60B	42	kg		
Peso Total	50A	122	kg		

Volume de concreto de VIGAS (m3)	Eixo	Faces
Taxa de armadura (kg/m3)	1.2	1.1
	68.9	74.3

ARMAÇÃO PILAR

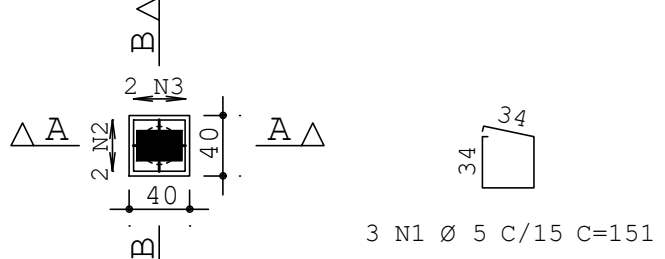


AÇO - PILAR					
50A	1	12.5	4	465	14880
60B	3	6.3	31	82	20336
RESUMO AÇO CA 50-60					
AÇO	BIT (mm)	COMPR (m)	PESO (kg)		
50A	6.3	203	50		
50A	12.5	150	150		
Peso Total 50A = 200 kg					
Volume de concreto de PILAR (m3)					
Eixo	Faces				
1.1	1.1				

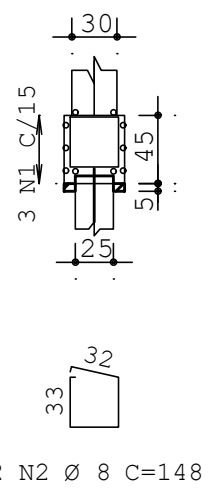
ARMAÇÃO BLOCOS SOBRE ESTACAS

B1 (ESCALA 1:50) 8 x

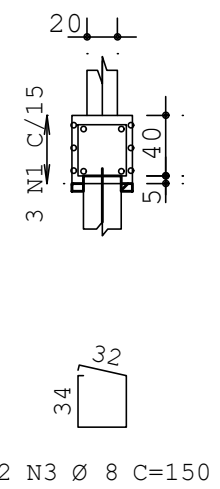
PLANTA



CORTE A - A



CORTE B - B



ACO	POS	BIT (mm)	QUANT	COMPRIMENTO (cm)	TOTAL (cm)
B1 (X8)					
60B	1	5	24	151	3624
50A	2	8	16	148	2368
50A	3	8	16	150	2400

ACO	POS	BIT (mm)	QUANT	COMPRIMENTO (cm)	TOTAL (cm)
RESUMO AÇO CA 50-60					
60B	5	36	6	6	6
50A	8	48	19	19	19
Peso Total	60B	6	kg		
Peso Total	50A	19	kg		

ESTACAS:
BROCA Ø 25 DE 4,0m
3Ø 8,0 c=2,0m
Estribo Ø 5,0 cada 20

Ø 8,0 = 48 m ==> 20 kg
Ø 5,0 = 50m ==>8,0 kg

— UENP —

UNIVERSIDADE ESTADUAL DO NORTE DO PARANÁ

PROJETO PROJETO DE ESTRUTURAS

OBRA REMANESCENTE DE OBRA - "AMPLIAÇÃO DO NITEC"

PROPRIETÁRIO RESPONSÁVEL TÉCNICO

UNIVERSIDADE ESTADUAL DO NORTE DO PARANÁ - UENP

CNPJ: 08.885.100/0001-54

LINCOLN MAKOTO NOZAKI

CREA-MG: 1.555-D

DESENHO LINCOLN MAKOTO NOZAKI

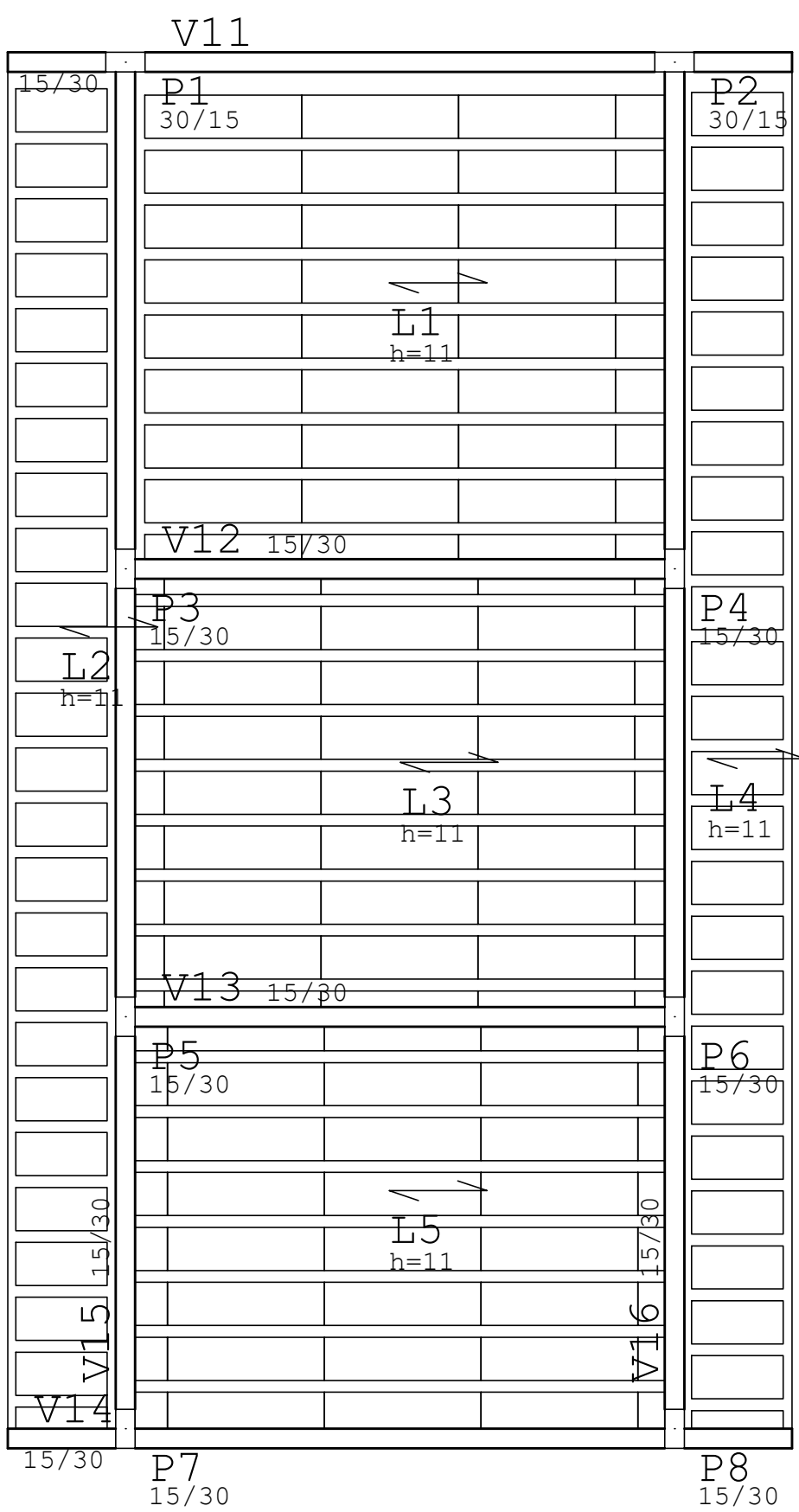
DATA FEVEREIRO/2021

ESCALA NO DESENHO

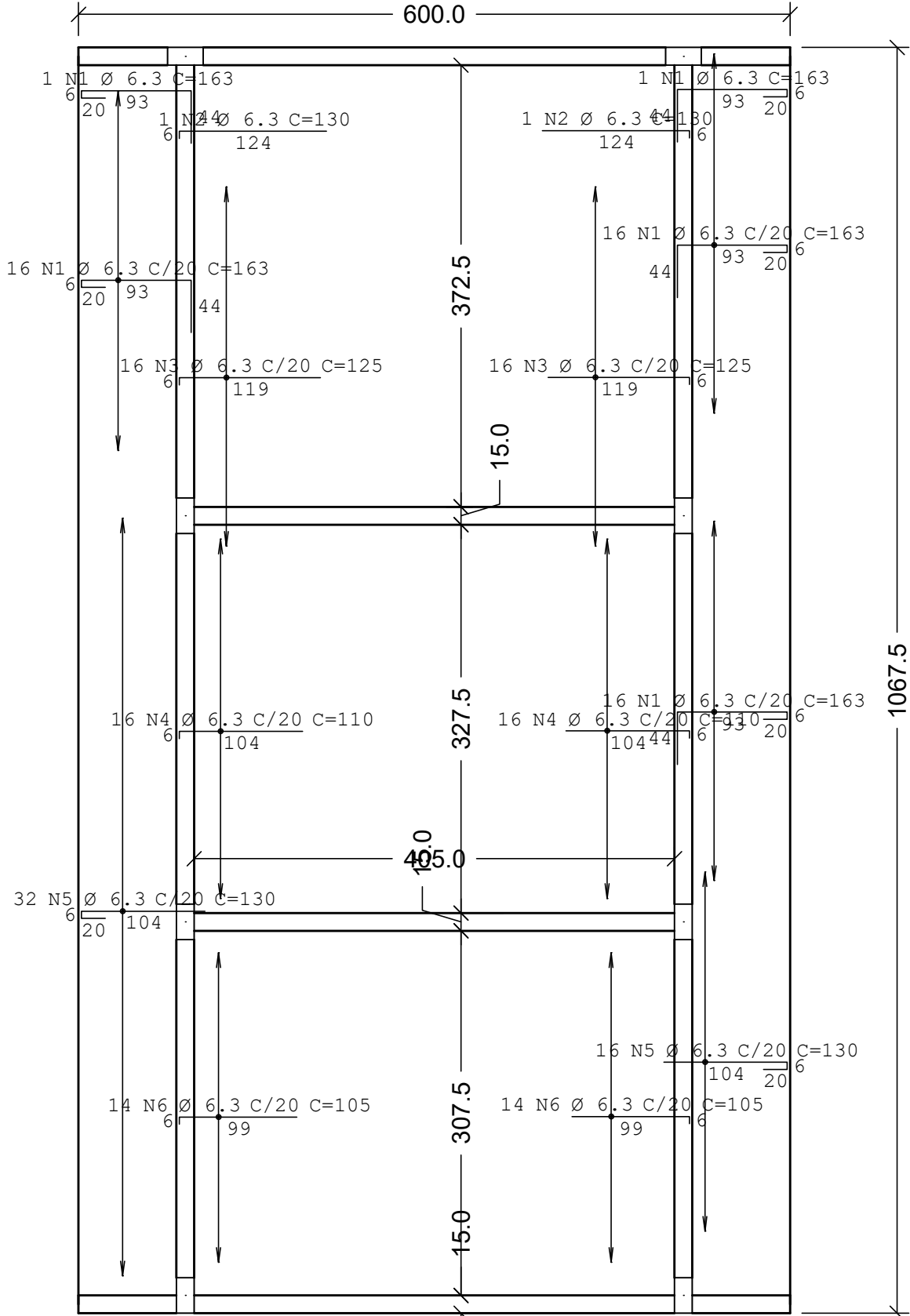
PRANCHA

PROPAV
PRÓ-REITORIA DE PLANEJAMENTO E AVALIAÇÃO INSTITUCIONAL
SECRETARIA DE OBRAS

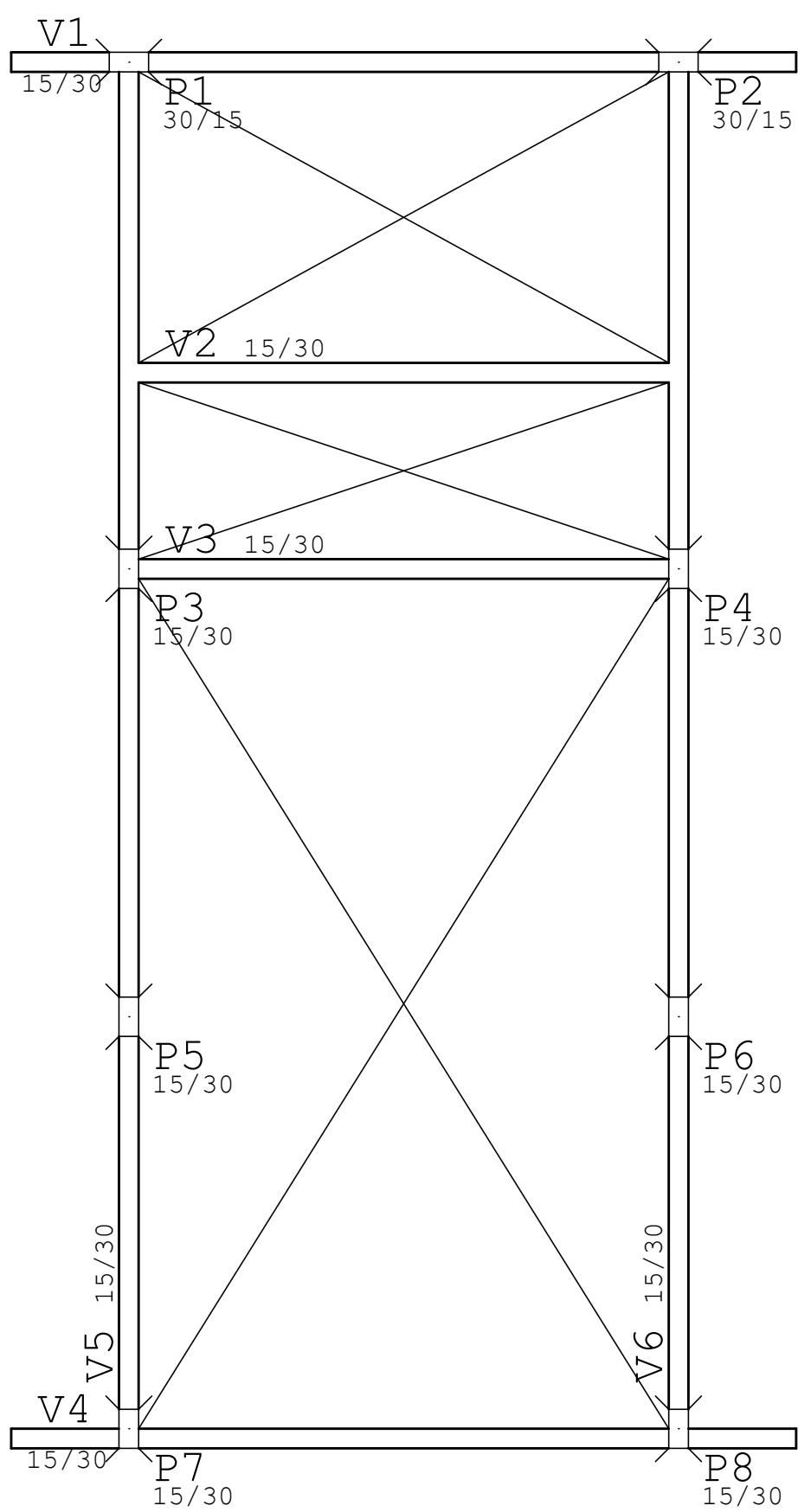
2/4



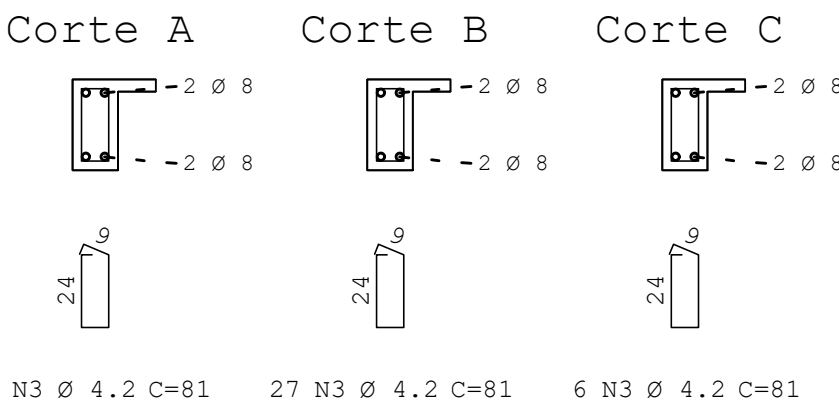
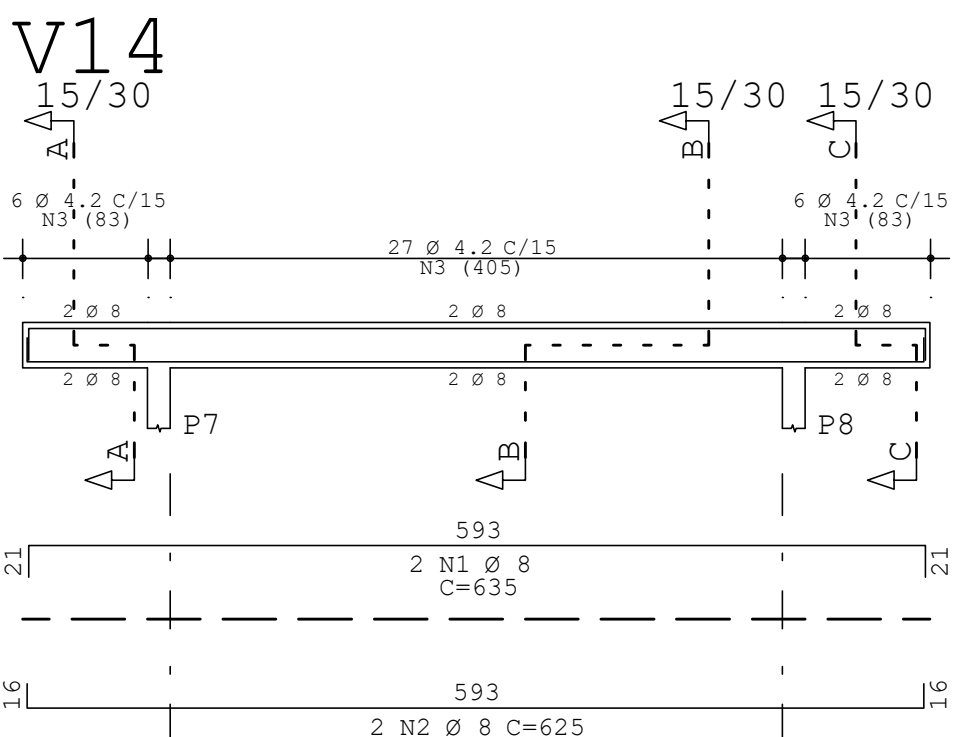
LAJE COBERTURA
Laje treliçada pre moldada



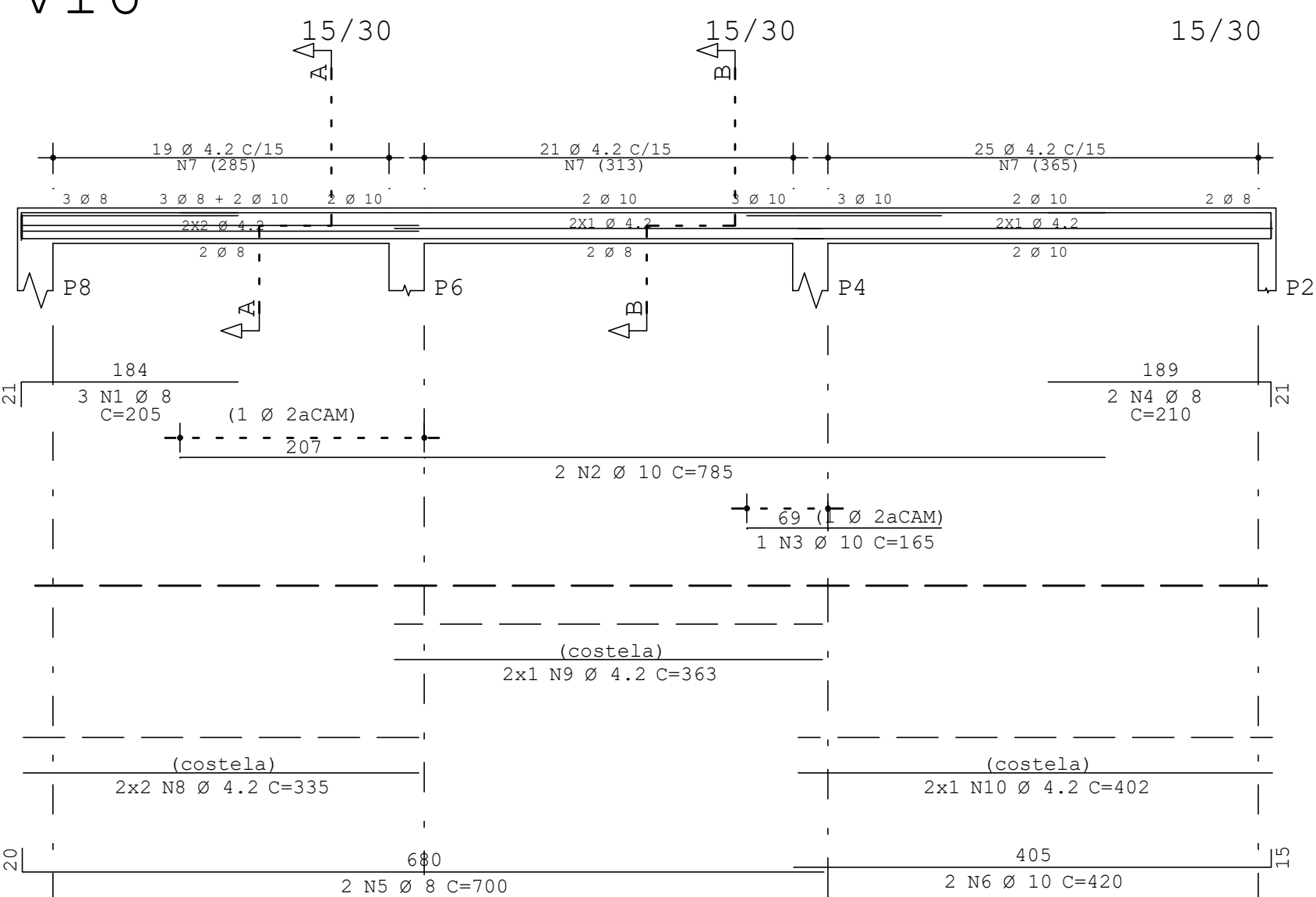
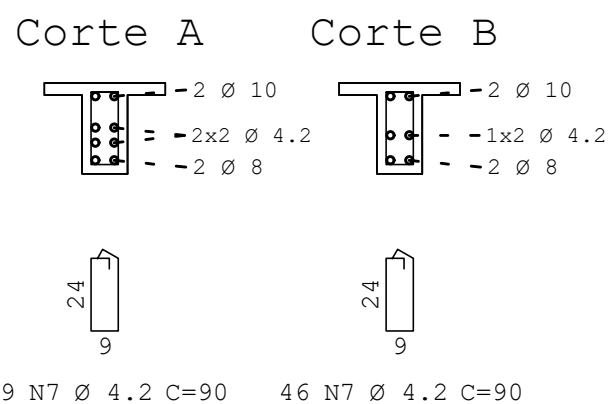
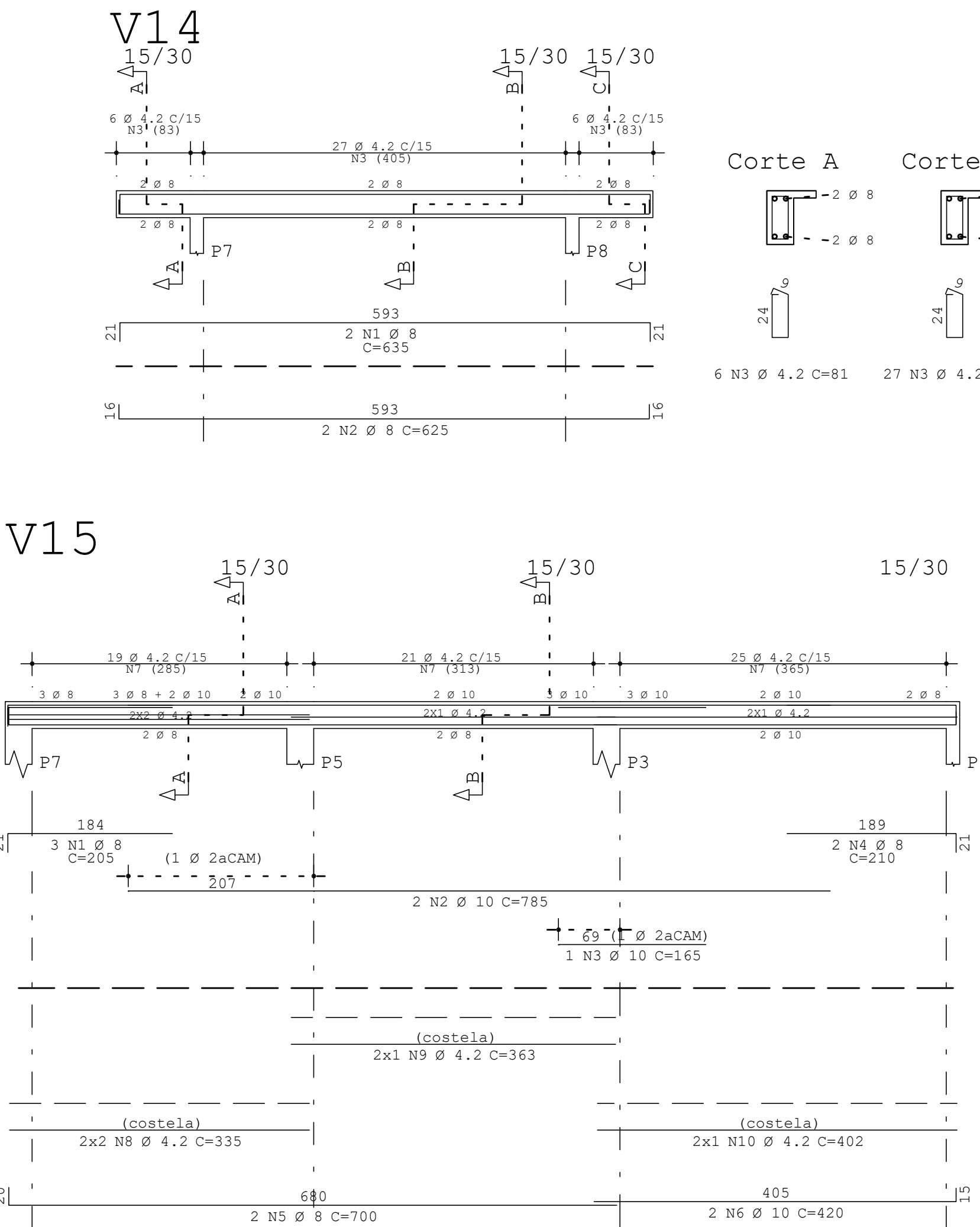
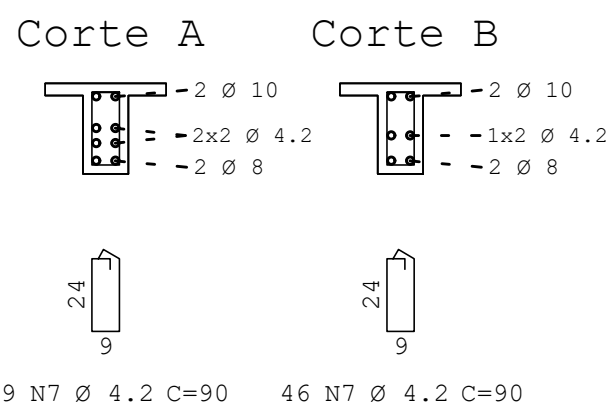
LAJE COBERTURA
Armadura negativa horizontal



FORMA
VIGA BALDRAME



ARMAÇÃO VIGAS



Documento: **PRANCHA02.pdf**.

Assinado digitalmente por: **Lincoln Makoto Nozaki** em 22/02/2021 11:19.

Inserido ao protocolo **17.368.976-4** por: **Leticia Sacoman Sampaio** em: 22/02/2021 11:11.



Documento assinado nos termos do art. 18 do Decreto Estadual 5389/2016.

A autenticidade deste documento pode ser validada no endereço:
<https://www.eprotocolo.pr.gov.br/spiweb/validarAssinatura> com o código:
d939b8b48dfef7aabcd2a0b9b906fa11.